

2013 TYRE CATALOGUE

—— Passenger Car, SUV and Light Truck ——



中策橡胶
zc rubber
 Hangzhou Zhongce Rubber Co.,Ltd.



ULTRA HIGH PERFORMANCE
 SPORTRS SA07 SA05 SV308

01-03

PASSENGER
 RP28 RP36 SP06 H550A
 RP26 RP09 RP19

04-07



SUV/LTR
 SL309 SL325 SL369 SU317
 SU318 SV308 SL366

08-10

COMMERCIAL LTR
 SL305 SC328 SC301 ST303 ST313
 CR869 H120 H160 H170 H200

15-21

Company Profile

A Company established in Year 1958
 No. 1 Tyre Manufacturer in China
 No. 10 of Top 75 Global Tyre Manufacturers in Year 2012
 Sale revenue reached USD4.88 billion in Year 2012

Hangzhou Zhongce Rubber Co., Ltd. (ZC-RUBBER) takes great pride in producing tyres that rate among the best in the world. Our corporate philosophy is all about collaboration with our suppliers, with the 10,000s of companies who sell our products around the globe, and with our millions of endcustomers who trust our tires every single day.

Our engineers are working together closely with our international Research and Development (R&D) team combined of Japanese and Korean experts. As a result we are set to join the ranks of the global top 10 tyre manufacturers in 2012. We keep on invest millions of US dollars in establishing various

production and testing facilities such as the first noise test labororium in China and the MTS Flat-Trac III CT Tyre Test System.

Our belief in producing quality tyres makes us to set up quality control system approved by most global tyre-manufacturers such as Goodyear, Cooper, Kumho and Yokohama, introduce world latest production facilities from Fischer, VMI, Krupp, etc, and inspect every single tyre by hand before it leaves the production line besides the X-ray, balancing and uniformity inspection by most advanced equipments imported from Germany, Japan and U.S.A. We guarantee our tyre quality by system, facilities and employees' responsibility.



WINTER
 SW601 SW602 SW606 SW608 SW612

22-26

STR
 STZC CR960A

26-XX

ATTACHMENT
TIRE TERMINOLOGY & BASIC KNOWLEDGE

XX-XX



SPORT RS

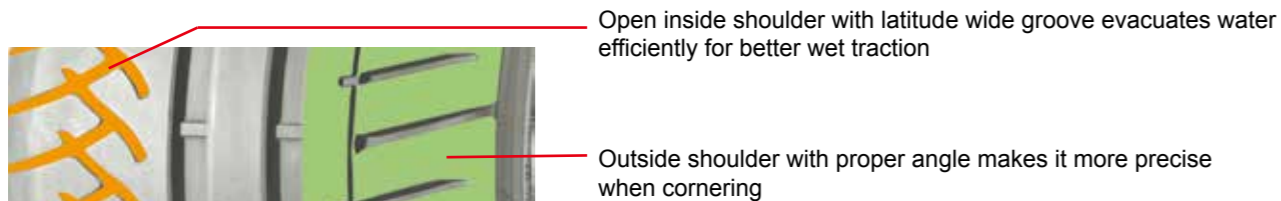
M+S

RIM SIZE	15 - 18
SERIES	35 - 50
SPEED RATING	V - W



Benefits and Features

- Ideal drifting tyre with special design and components based on competition experiences
- Asymmetric tread design with big pattern blocks and SEMI-SLICK compound provides superior grip ability
- Continuous center rib generates better grip in dry conditions and enhances high-speed stability



SPORT RS

Size	Speed Index	Tread Depth	Standard Rim	Section Width (mm)	Overall Diameter (mm)	Max. Load (kg)	Max. Air Pressure (kpa)	UTQG
195/50R15	82V	7.7	6.00J	201	577	475	300	180 AA A
205/45ZR16 XL	87W	7.7	7.00J	206	590	545	350	180 AA A
245/40ZR17 XL	95W	7.7	8.50J	248	628	690	350	180 AA A
225/45ZR17 XL	94W	7.7	7.5J	225	634	670	350	180 AA A
265/35ZR18 XL	97W	7.7	9.50J	271	643	730	350	180 AA A
235/40ZR18 XL	95W	7.7	8.50J	241	645	690	350	180 AA A



SA07

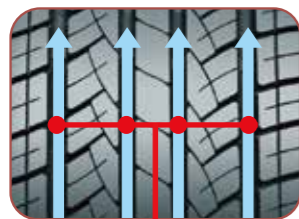
M+S

RIM SIZE	16-20inch
SERIES	35-55
SPEED RATING	V-Y

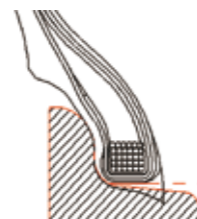


Benefits and Features

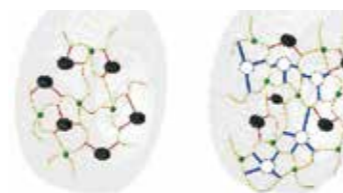
- Premium personal tyres for sedans and race cars
- Silica tech was adopted for low rolling resistance and low noise
- RIM PEOTECTOR protects the wheel rim and provides superior handling control and enhanced cornering



Four wide circumferential grooves to ensure quick and efficient water evacuation for enhanced wettraction



RIM Protector to protect the wheel rim



Silica tech for better type performance



SA07

Size	Speed Index	Tread Depth	Standard Rim	Section Width (mm)	Overall Diameter (mm)	Max. Load (kg)	Max. Air Pressure (kpa)	UTQG
205/55R16	91V	8.0	7.0J	214	632	615	300	280 AA A
215/55R16	93V	8.5	7.0J	226	642	730	300	280 AA A
215/55R16 XL	97W	8.5	7.0J	226	642	730	350	280 AA A
225/55R16	95W	8.5	7.0J	233	654	690	300	280 AA A
225/55R16 XL	99W	8.5	7.0J	233	654	775	350	280 AA A
245/40ZR17 XL	95W	8.0	8.5J	248	628	690	350	280 AA A
215/45ZR17 XL	91W	8.0	7.0J	213	626	615	350	280 AA A
225/45ZR17 XL	94W	8.0	7.5J	225	634	670	350	280 AA A
235/45ZR17 XL	97W	8.0	8.0J	236	644	730	350	280 AA A
245/45ZR17	95Y	8.0	8.0J	243	652	690	300	280 AA A
255/45ZR17	98W	8.0	8.5J	255	662	750	300	280 AA A
205/50R17	89W	8.0	6.5J	214	638	580	300	280 AA A
215/50R17	91W	8.0	7.0J	226	648	615	300	280 AA A
225/50R17	94W	8.5	7.0J	233	658	670	300	280 AA A
225/50R17 XL	98W	8.5	7.0J	233	658	750	350	280 AA A
215/55R17	94V	8.5	7.0J	226	668	670	300	280 AA A
215/55R17 XL	98W	8.5	7.0J	226	668	750	350	280 AA A
225/55R17	97W	8.0	7.0J	233	680	730	300	280 AA A
235/55R17	99W	8.0	7.5J	245	690	775	300	280 AA A
215/35ZR18 XL	84W	8.0	7.5J	218	607	500	350	280 AA A
225/40ZR18 XL	92W	8.0	8.0J	230	637	630	350	280 AA A
235/40ZR18 XL	95W	8.0	8.50J	241	645	690	350	280 AA A
245/40ZR18 XL	97Y	8.0	8.5J	248	653	730	350	280 AA A
215/45ZR18	89W	8.0	7.0J	213	651	580	300	280 AA A
225/45ZR18 XL	95W	8.0	7.5J	225	659	690	350	280 AA A
235/45ZR18	94Y	8.0	8.0J	236	669	670	300	280 AA A
245/45ZR18	96Y	8.0	8.0J	243	677	710	300	280 AA A
235/50R18 XL	101W	8.0	7.5J	245	693	825	350	280 AA A
245/50R18	100Y	8.0	7.5J	253	703	800	300	280 AA A
235/35ZR19 XL	91W	8.0	8.5J	241	647	615	350	280 AA A
245/35ZR19 XL	93W	8.0	8.5J	248	655	650	350	280 AA A
255/35ZR19 XL	96W	8.0	9.0J	260	661	710	350	280 AA A
245/40ZR19	94Y	8.0	8.5J	248	679	670	300	280 AA A
255/40ZR19 XL	100W	8.0	9.0J	260	687	800	350	280 AA A
265/50R20 XL	111V	8.0	8.5J	277	774	1090	350	280 AA A
245/35ZR20 XL	95W	8.0	8.5J	248	680	690	350	280 AA A

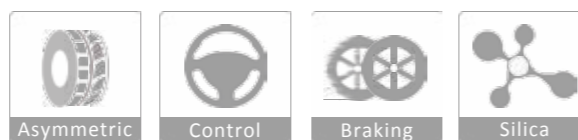


SA05

SA05

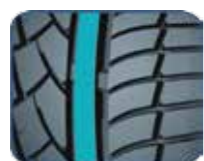
M+S

RIM SIZE	15-18inch
SERIES	40-55
SPEED RATING	V-W



Benefits and Features

- Asymmetric tread design increases cornering stability for better all-season performance
- Silica-based compound maximizes contact between the tire and road for enhanced grip in wet and dry conditions
- Two wide circumferential grooves quickly and efficiently evacuate water for enhanced wet traction



Continuous center rib generates better on-center feel and enhances high-speed stability



Asymmetric tread design with large outer blocks helps enhance cornering grip

Size	Speed Index	Tread Depth	Standard Rim	Section Width (mm)	Overall Diameter (mm)	Max. Load (kg)	Max. Air Pressure (kpa)	UTQG
195/50R15	82V	8.0	6.00J	201	577	475	250	360 A A
185/55R15	82V	7.8	6.00J	194	585	475	300	360 A A
195/55R15	85V	8.0	6.00J	201	595	515	250	360 A A
205/45ZR16 XL	87W	8.0	7.00J	206	590	545	350	360 A A
205/50R16	87W	8.0	6.50J	214	612	545	350	360 A A
225/50R16	92W	8.0	7.00J	233	632	630	350	360 A A
205/55R16 XL	94W	8.0	6.50J	214	632	670	350	360 A A
215/55R16 XL	97W	8.0	7.00J	226	642	730	350	360 A A
225/55R16 XL	99W	8.0	7.00J	233	654	775	350	360 A A
205/50R17 XL	93W	8.0	6.50J	214	638	650	350	360 A A
215/50R17 XL	95W	8.0	7.00J	226	648	690	350	360 A A
225/50R17 XL	98W	8.0	7.00J	233	658	750	350	360 A A
215/55R17 XL	98W	8.0	7.00J	226	668	750	350	360 A A
225/55R17 XL	101W	8.2	7.00J	233	680	825	350	360 A A
235/55R17 XL	103W	8.2	7.50J	245	690	875	350	360 A A
215/40ZR17 XL	87W	8.0	7.50J	218	604	545	350	360 A A
205/45ZR17 XL	88W	8.0	7.00J	206	616	560	350	360 A A
215/45ZR17 XL	91W	8.0	7.00J	213	626	615	350	360 A A
225/45ZR17 XL	94W	8.0	7.50J	225	634	670	350	360 A A
235/45ZR17 XL	97W	8.0	8.00J	236	644	730	350	360 A A
205/40ZR17 XL	84W	8.0	7.50J	212	596	500	350	360 A A
235/40ZR18 XL	95W	8.0	8.50J	241	645	690	350	360 A A



SV308

SV308

M+S

RIM SIZE	15-20inch
SERIES	30-55
SPEED RATING	V-W



Benefits and Features

- All season Silica-based compound for improving wet and dry traction without sacrificing treadwear
- RIM PROTECTOR protects the wheel rim and helps resist lateral deflection while providing superior handling control and enhanced cornering
- Circumferential V-groove promote proper water drainage without impacting cornering grip
- Solid center rib provides stable on-center feel and outstanding wet traction during cornering



Variable grooves and sipes optimizes the contact with road improve traction when cornering and reduces noises RIM PROTECTOR protect the wheel rim from unexpected damage

V-groove design working with two circumferential groove ensures quick and efficient water evacuation

Size	Service Index	Standard Rim	Section Width (mm)	Overall Diameter (mm)	Max. Load (kg)	Max. Air Pressure (kpa)	UTQG
195/50R15	82V	6.00J	201	577	475	250	360 A A
185/55R15	82V	6.00J	194	585	475	300	360 A A
195/55R15	85V	6.00J	201	595	515	250	360 A A
205/50R16	87W	6.50J	214	612	545	350	360 A A
225/50R16	92W	7.00J	233	632	630	350	360 A A
205/55R16 XL	94W	6.50J	214	632	670	350	360 A A
205/45ZR16 XL	87W	7.00J	206	590	545	350	360 A A
215/55R16 XL	97W	7.00J	226	642	730	350	360 A A
225/55R16 XL	99W	7.00J	233	654	775	350	360 A A
205/50R17 XL	93W	6.50J	214	638	650	350	360 A A
215/50R17 XL	95W	7.00J	226	648	690	350	360 A A
225/50R17 XL	98W	7.00J	233	658	750	350	360 A A
215/55R17 XL	98W	7.00J	226	668	750	350	360 A A
225/55R17 XL	101W	7.00J	233	680	825	350	360 A A
235/55R17 XL	103W	7.50J	245	690	875	350	360 A A
205/40ZR17 XL	84W	7.50J	212	596	500	350	360 A A
215/40ZR17 XL	87W	7.50J	218	604	545	350	360 A A
205/45ZR17 XL	88W	7.00J	206	616	560	350	360 A A
215/45ZR17 XL	91W	7.00J	213	626	615	350	360 A A
225/45ZR17 XL	94W	7.50J	225	634	670	350	360 A A
235/45ZR17 XL	97W	8.00J	236	644	730	350	360 A A
225/40ZR18 XL	92W	8.00J	230	637	630	350	360 A A
235/40ZR18 XL	95W	8.50J	241	645	690	350	360 A A
245/30ZR20 XL	90W	8.50J	248	656	600	300	360 A A



RP28

M+S

RIM SIZE	14 - 16
SERIES	50 - 70
SPEED RATING	T - V



NEW

Benefits and Features

- A comfortable ride premium touring tyre
- Computer aided designed tread offering low noise and excellent water drainage.
- SILICA TECH compounding technology ensuring low rolling resistance and saving fuel expenditure
- Improved shoulder sipes providing better handling during cornering



LOWER Rolling Resistance

Silica Tech is adopted for low rolling resistance resulting in better fuel efficiency



Improved Pattern Design

Various sipe pitches helps to reduces noise for a quiet and comfortable ride



RP28

Size	Speed Index	Tread Depth	Standard Rim	Section Width (mm)	Overall Diameter (mm)	Max. Load (kg)	Max. Air Pressure (kpa)	UTQG
175/60R14	79H	7.5	5.00J	177	566	437	300	400 A A
185/60R14	82H	7.5	5.50J	189	578	475	300	400 A A
195/60R14	86H	7.8	6.00J	201	590	530	300	440 A A
175/65R14	82H	7.5	5.00J	177	584	475	300	400 A A
185/65R14	86H	7.5	5.50J	189	596	530	300	400 A A
165/70R14	81T	7.5	5.00J	170	588	462	300	400 A A
175/70R14	84T	7.5	5.00J	177	602	500	300	400 A A
185/70R14	88T	7.5	5.50J	189	616	560	300	400 A A
195/70R14	91T	7.8	6.00J	201	630	615	300	440 A A
195/50R15	82V	7.8	6.00J	201	577	475	300	360 A A
185/55R15	82V	7.5	6.00J	194	585	475	300	360 A A
195/55R15	85V	7.8	6.00J	201	595	515	300	360 A A
175/60R15	81H	7.5	5.00J	177	591	462	300	400 A A
185/60R15	84H	7.5	5.50J	189	621	560	300	400 A A
195/60R15	88H	7.8	6.01J	201	615	560	300	440 A A
205/60R15	91H	7.8	6.00J	209	627	615	300	440 A A
175/65R15	84H	7.5	5.00J	177	609	500	300	400 A A
185/65R15	88H	7.5	5.50J	189	621	560	300	400 A A
195/65R15	91H	7.8	6.00J	201	635	615	300	440 A A
205/65R15	94H	7.8	6.00J	209	647	670	300	440 A A
215/65R15	96H	7.8	6.50J	221	661	710	300	440 A A
205/70R15	96H	7.8	6.00J	209	669	710	300	440 A A
215/70R15	98H	7.8	6.50J	221	683	750	300	440 A A
195/50R16	84V	7.8	6.00J	201	602	500	300	360 A A
205/50R16	87V	7.8	6.50J	214	612	545	300	360 A A
185/55R16	83V	7.5	6.00J	194	610	487	300	360 A A
195/55R16	87V	7.8	6.00J	201	620	545	300	360 A A
205/55R16	91V	7.8	6.50J	214	632	615	300	360 A A
215/55R16	93V	7.8	7.00J	226	642	650	300	360 A A
225/55R16	95V	7.8	7.00J	233	654	690	300	360 A A
195/60R16	89H	7.8	6.00J	201	640	580	300	440 A A
205/60R16	92H	7.8	6.00J	209	652	630	300	440 A A
215/60R16	95H	7.8	6.50J	221	664	690	300	440 A A
225/60R16	98H	7.8	6.50J	228	676	750	300	440 A A
235/60R16	100H	7.8	7.00J	240	688	800	300	440 A A
205/65R16	95H	7.8	6.00J	209	672	690	300	440 A A
215/65R16	98H	7.8	6.50J	221	686	750	300	440 A A



RP36

RP36

M+S

RIM SIZE	13 - 16
SERIES	55 - 70
SPEED RATING	T - V

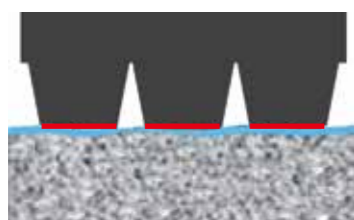


NEW

Benefits and Features

- Variable pitches tread blocks for high stability and reduce noise
- Continuous center rib delivering better straight handling
- Four grooves with open shoulder provides perfect water evacuation

Tire tread



Silica Covered tread compound promotes an extraordinary quiet drive feeling

Size	Speed Index	Tread Depth	Standard Rim	Section Width (mm)	Overall Diameter (mm)	Max. Load (kg)	Max. Air Pressure (kpa)	UTQG
155/65R13	73T	7.5	4.5B	157	532	365	300	440 A A
165/65R13	77T	7.5	5.0B	170	544	412	300	440 A A
165/70R13	79T	8.0	5.0B	170	562	437	300	440 A A
185/60R14	82H	8.0	5.5J	189	578	475	300	480 A A
195/60R14	86H	8.0	6.0J	201	590	530	300	480 A A
155/65R14	75T	7.5	4.5B	157	558	387	300	440 A A
175/65R14	82H	8.0	5.0J	177	584	475	300	440 A A
185/65R14	86H	8.0	5.5J	189	596	530	300	480 A A
165/70R14	81T	8.0	5.0J	170	588	462	300	440 A A
175/70R14	84T	8.0	5.0J	177	602	500	300	440 A A
195/55R15	85V	8.2	6.0J	201	595	515	300	360 A A
185/60R15	84H	8.0	5.5J	189	603	500	300	480 A A
195/60R15	88V	8.0	6.0J	201	615	560	300	360 A A
205/60R15	91H	8.2	6.0J	209	627	615	300	480 A A
185/65R15	88H	8.0	5.5J	189	621	560	300	480 A A
195/65R15	91V	8.0	6.0J	201	635	615	300	360 A A
205/65R15	94H	8.2	6.0J	209	647	670	300	480 A A
205/70R15	95H	8.2	6.0J	209	669	710	300	480 A A
215/70R15	98H	8.2	6.5J	221	683	750	300	480 A A
205/55R16	91V	8.0	6.5J	214	632	615	300	360 A A
215/55R16	93V	8.0	7.0J	226	642	650	300	360 A A
195/60R16	89H	8.0	6.0J	201	640	580	300	480 A A
215/60R16	95H	8.5	6.5J	221	664	690	300	480 A A
225/60R16	98H	8.5	6.5J	228	676	750	300	480 A A



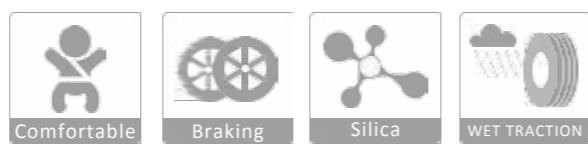
RP26



RP26

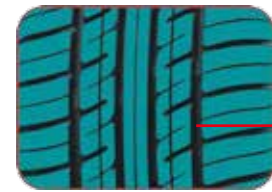
M+S

RIM SIZE	13 - 16
SERIES	50 - 80
SPEED RATING	T - V



Benefits and Features

- Improved tire structure compared to H550 for longer tire life and more comfort ride
- Lower rolling resistance for improved fuel economy



Random pitch tread blocks are staggered to break up the pattern noise for quiet riding

Enhanced shoulder design for better traction in dry and wet roads



Size	Speed Index	Tread Depth	Standard Rim	Section Width (mm)	Overall Diameter (mm)	Max. Load (kg)	Max. Air Pressure (kpa)	UTQG	
175/60R13	77H	8.0	5.0J	177	540	412	300	440	A A
155/65R13	73T	7.5	4.5B	157	532	365	300	440	A A
165/65R13	77T	7.5	5.0B	170	544	412	300	440	A A
165/70R13	79T	8.0	5.0B	170	562	437	300	440	A A
175/70R13	82T	8.0	5.00B	177	576	475	300	440	A A
175/60R14	79H	8.0	5.0J	177	566	437	300	440	A A
185/60R14	82H	8.0	5.50J	189	578	475	300	480	A A
195/60R14	86H	8.0	6.00J	201	590	530	300	480	A A
155/65R14	75T	7.5	4.5B	157	558	387	300	440	A A
175/65R14	82H	8.0	5.00J	177	584	475	300	440	A A
185/65R14	86H	8.0	5.50J	189	596	530	300	480	A A
165/70R14	81T	8.0	5.0J	170	588	462	300	440	A A
175/70R14	84T	8.0	5.0J	177	602	500	300	440	A A
185/70R14	88T	8.0	5.50J	189	616	560	300	480	A B
195/70R14	91T	8.0	6.00J	201	630	615	300	480	A A
195/50R15	82V	8.0	6.00J	201	577	475	300	360	A A
185/55R15	82V	8.0	6.00J	194	585	475	300	360	A A
195/55R15	85V	8.2	6.00J	201	595	515	300	360	A A
175/60R15	81H	8.0	5.0J	177	591	462	300	440	A A
185/60R15	84H	8.0	5.50J	189	603	500	300	480	A A
195/60R15	88H	8.0	6.00J	201	615	560	300	480	A A
205/60R15	91H	8.2	6.00J	209	627	615	300	480	A A
175/65R15	84H	8.0	5.00J	177	609	500	300	440	A A
185/65R15	88H	8.0	5.50J	189	621	560	300	480	A A
195/65R15	91H	8.0	6.00J	201	635	615	300	480	A A
205/65R15	94H	8.2	6.00J	209	647	670	300	480	A A
215/65R15	96H	8.5	6.5J	221	661	710	300	480	A A
205/70R15	96H	8.2	6.00J	209	669	710	300	480	A A
215/70R15	98H	8.2	6.50J	221	683	750	300	480	A A
195/50R16	84V	8.0	6.00J	201	602	500	300	360	A A
185/55R16	83V	8.0	6.00J	194	610	487	300	360	A A
195/55R16	91V	8.2	6.00J	201	620	545	300	360	A A
205/55R16	91V	8.0	6.50J	214	632	615	300	360	A A
195/60R16	89H	8.0	6.00J	201	640	580	300	480	A A
205/60R16	92H	8.2	6.00J	209	652	630	300	480	A A
215/60R16	95H	8.5	6.50J	221	664	690	300	480	A A
225/60R16	98H	8.5	6.50J	228	676	750	300	480	A A
235/60R16	100H	8.5	7.00J	240	688	800	300	480	A A
205/65R16	95H	8.2	6.0J	209	672	690	300	480	A A



SP06

M+S

RIM SIZE	13 - 16
SERIES	50 - 80
SPEED RATING	T - V



Benefits and Features

- Perfect Balance of High Performance and High Value
- All-season, comfortable ride, long tread life and excellent performance
- Stable on-center feel and outstanding wet traction during cornering
- Improved shoulder sipes to combat uneven wearing

Size	Speed Index	Tread Depth	Standard Rim	Section Width (mm)	Overall Diameter (mm)	Max. Load (kg)	Max. Air Pressure (kpa)	UTQG
155/65R13	73T	7.5	4.50B	157	532	365	300	440 A A
165/65R13	77T	7.5	5.00B	170	544	412	300	440 A A
155/70R13	75T	7.3	4.50B	157	548	387	300	460 A A
165/70R13	79T	7.5	5.00B	170	562	437	300	460 A A
175/70R13	82T	7.5	5.00B	177	576	475	300	440 A B
185/70R13	86T	7.8	5.50J	189	590	530	300	460 A B



SP06

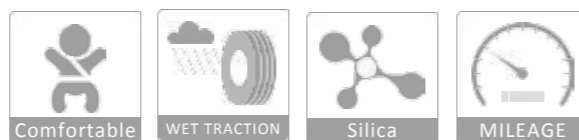
Size	Speed Index	Tread Depth	Standard Rim	Section Width (mm)	Overall Diameter (mm)	Max. Load (kg)	Max. Air Pressure (kpa)	UTQG
155/80R13	79T	7.5	4.50B	157	578	437	300	460 A A
165/80R13	83T	7.5	4.50B	165	594	487	300	460 A A
165/60R14	75T	7.0	5.00J	170	554	387	300	460 A A
185/60R14	82H	8.0	5.50J	189	578	475	300	460 A A
195/60R14	86H	7.8	6.00J	201	590	530	300	480 A A
175/65R14	82H	7.5	5.00J	177	584	475	300	460 A A
185/65R14	86H	7.8	5.50J	189	596	530	300	480 A A
165/70R14	81T	7.5	5.00J	170	588	462	300	460 A A
175/70R14	84T	7.5	5.00J	177	602	500	300	460 A A
185/70R14	88T	7.8	5.50J	189	616	560	300	480 A B
195/70R14	91T	7.8	6.00J	201	630	615	300	500 A B
205/70R14	95T	8.0	6.00J	209	644	690	300	500 A A
175/80R14	88T	7.5	5.00J	177	636	560	300	460 A A
185/80R14	91T	7.8	5.00J	184	652	615	300	480 A A
195/50R15	82V	8.0	6.00J	201	577	475	250	360 A A
195/55R15	85V	8.0	6.00J	201	595	515	250	360 A A
185/60R15	84H	7.8	5.50J	189	603	500	300	480 A A
195/60R15	88H	7.9	6.00J	201	615	560	300	500 A A
205/60R15	91H	8.0	6.00J	209	627	615	300	500 A A
215/60R15	94H	8.5	6.5J	221	639	670	300	500 A A
185/65R15	88H	7.8	5.50J	189	621	560	300	480 A A
195/65R15	91H	7.9	6.00J	201	635	615	300	500 A A
205/65R15	94H	8.0	6.00J	209	647	670	300	500 A A
215/65R15	96H	8.5	6.5J	221	661	710	300	500 A A
205/70R15	96H	8.0	6.00J	209	669	710	300	500 A A
215/70R15	98H	8.2	6.50J	221	683	750	300	500 A A
205/50R16	87V	8.0	6.50J	214	612	545	250	360 A A
205/55R16	91H	8.0	6.50J	214	632	615	300	500 A A
205/60R16	92H	8.0	6.00J	209	652	630	300	500 A A
215/60R16	95H	8.1	6.50J	221	664	690	300	500 A A
225/60R16	98H	8.2	6.50J	228	676	750	300	500 A A
235/60R16	100H	8.2	7.00J	240	688	800	300	500 A A
205/65R16	95H	8.2	6.0J	209	672	690	300	500 A A
215/65R16	98H	8.5	6.5J	221	686	750	300	500 A A
225/65R16	100H	8.5	6.50J	228	698	800	300	500 A A
235/65R16	103H	8.5	7.0J	240	712	875	300	500 A A



H550A

M+S

RIM SIZE	13 - 16
SERIES	50 - 80
SPEED RATING	T - V



Benefits and Features

- Improved tire structure compared to H550 for longer tire life and more comfort ride
- Lower rolling resistance for improved fuel economy



Two wider and four narrow circumferential grooves to evacuate water quickly for increased wet handling and stopping capability
 Specially tread compound to provide increase tread life

H550A

Size	Speed Index	Tread Depth	Standard Rim	Section Width (mm)	Overall Diameter (mm)	Max. Load (kg)	Max. Air Pressure (kpa)	UTQG
155/65R13	73T	7.5	4.50B	157	532	365	300	440 A A
165/65R13	77T	7.5	5.00B	170	544	412	300	440 A A
155/70R13	75T	7.3	4.50B	157	548	387	300	460 A A
165/70R13	79T	7.5	5.00B	170	562	437	300	460 A A
175/70R13	82T	7.5	5.00B	177	576	475	300	440 A B
185/70R13	86T	7.8	5.50J	189	590	530	300	460 A B
155/80R13	79T	7.5	4.50B	157	578	437	300	460 A A
165/80R13	83T	7.5	4.50B	165	594	487	300	460 A A
185/60R14	82H	7.8	5.50J	189	578	475	300	460 A A
195/60R14	86H	7.8	6.00J	201	590	530	300	480 A A
175/65R14	82H	7.5	5.00J	177	584	475	300	460 A A
185/65R14	86H	7.8	5.50J	189	596	530	300	480 A A
165/70R14	81T	7.5	5.00J	170	588	462	300	460 A A
175/70R14	84T	7.5	5.00J	177	602	500	300	460 A A
185/70R14	88T	7.8	5.50J	189	616	560	300	480 A B
195/70R14	91T	7.8	6.00J	201	630	615	300	500 A B
205/70R14	95T	8.0	6.00J	209	644	690	300	500 A A
175/80R14	88T	7.5	5.00J	177	636	560	300	460 A A
185/80R14	91T	7.8	5.00J	184	652	615	300	480 A A
195/50R15	82V	8.0	6.00J	201	577	475	300	360 A A
195/55R15	85V	8.0	6.00J	201	595	515	300	360 A A
185/60R15	84H	7.8	5.50J	189	603	500	300	480 A A
195/60R15	88H	7.9	6.00J	201	615	560	300	500 A A
205/60R15	91H	8.0	6.00J	209	627	615	300	500 A A
185/65R15	88H	7.8	5.50J	189	621	560	300	480 A A
195/65R15	91H	7.9	6.00J	201	635	615	300	500 A A
205/65R15	94H	8.0	6.00J	209	647	670	300	500 A A
215/65R15	96H	8.5	6.5J	221	661	710	300	500 A A
205/70R15	96H	8.0	6.00J	209	669	710	300	500 A A
215/70R15	98H	8.2	6.50J	221	683	750	300	500 A A
205/50R16	87V	8.0	6.50J	214	612	545	300	360 A A
205/55R16	91H	8.0	6.50J	214	632	615	300	500 A A
205/60R16	92H	8.0	6.00J	209	652	630	300	500 A A
215/60R16	95H	8.1	6.50J	221	664	690	300	500 A A
225/60R16	98H	8.2	6.50J	228	676	750	300	500 A A
235/60R16	100H	8.2	7.0J	240	712	875	300	500 A A
205/65R16	95H	8.2	6.0J	209	672	690	300	500 A A
215/65R16	98H	8.5	6.5J	221	686	750	300	500 A A
225/65R16	100H	8.5	6.50J	228	698	800	300	500 A A



RP09/RP19

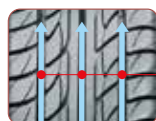
M+S

RIM SIZE	13 - 16
SERIES	60 - 80
SPEED RATING	T - V

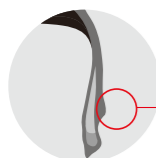


Benefits and Features

- Super mileage compound provides best value with 25% longer tire life compared to available products
- Wider tread width provides comfortable riding and excellent traction on both dry and wet roads
- Variable pitch tread blocks for high stability and reduced noise



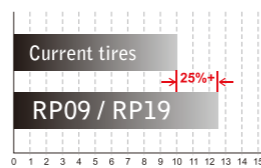
Three grooves ensure quick and effective water drainage in wet environment



Rim protector design protects the wheel rim and provides stronger tire body



Better Mileage Performance compared to available tires



RP09/RP19

Size	Speed Index	Tread Depth	Standard Rim	Section Width (mm)	Overall Diameter (mm)	Max. Load (kg)	Max. Air Pressure (kpa)	UTQG
165/70R13	79T	9.0	5.00B	170	562	437	300	520 A A
185/60R14	82H	9.0	5.50J	189	578	475	300	520 A A
195/60R14	86H	9.0	6.00J	201	590	530	300	520 A A
165/70R14	81T	8.5	5.00J	170	588	462	300	520 A A
175/80R14 <small>RP09 only</small>	88T	9.0	5.00J	177	636	560	300	520 A A
195/60R15	88H	9.0	6.00J	201	615	560	300	520 A A
205/60R15	91H	9.0	6.00J	209	627	615	300	520 A A
195/65R15	91H	9.0	6.00J	201	635	615	300	520 A A
205/65R15	94H	9.0	6.00J	209	647	670	300	520 A A
185/65R15 <small>RP19 only</small>	88H	9.0	5.50J	189	621	560	300	520 A A
215/60R16	95V	8.5	6.50J	221	664	690	300	520 A A



SU318

M+S

RIM SIZE	15 - 20
SERIES	40 - 75
SPEED RATING	T - V



NEW

Benefits and Features

- Ideal H/T tyre integrated outstanding on-road comfort and wet traction safety as a whole
- Four longitude grooves combined with wind sipes ensure excellent water evacuation and wet traction performance
- SILICA TECH adopted for better wet grip as well as low rolling resistance
- Re-constructed steel bead wire improves driving comfort effectively



Pre-deformation steel cords used to improve tyre strength and durability



Four wide circumferential grooves to ensure quick and efficient water evacuation for enhanced wet traction



SU318

Size	Speed Index	Tread Depth	Standard Rim	Section Width (mm)	Overall Diameter (mm)	Max. Load (kg)	Max. Air Pressure (kpa)	UTQG
225/75R15	102T	8.7	6.00J	223	719	850	300	400 AA A
235/75R15	105T	8.7	6.50J	235	733	925	300	400 AA A
215/70R16	100H	8.7	6.50J	221	708	800	300	400 AA A
225/70R16	103T	8.7	6.50J	228	722	875	300	400 AA A
235/70R16	106T	8.7	7.00J	240	736	950	300	400 AA A
255/70R16	111T	9.5	7.50J	260	764	1090	300	400 AA A
245/70R16 XL	111T	9.5	7.00J	248	750	975	350	400 AA A
265/70R16	112T	9.5	8.00J	272	778	1120	300	400 AA A
275/70R16	114T	9.5	8.00J	279	792	1180	300	400 AA A
225/75R16	104T	8.7	6.00J	223	744	900	300	400 AA A
235/75R16	108T	8.7	6.50J	235	758	1000	300	400 AA A
245/75R16	111T	9.5	7.00J	248	774	1090	300	400 AA A
265/75R16	116T	9.5	7.50J	267	804	1250	300	400 AA A
215/60R17	96H	8.0	6.50J	221	690	710	300	400 AA A
225/60R17	99T	8.7	6.50J	228	702	775	300	400 AA A
235/60R17	102T	8.7	7.00J	240	714	750	300	400 AA A
265/60R17	108T	9.5	8.00J	272	750	1000	300	400 AA A
275/60R17	110T	9.5	8.00J	279	762	1060	300	400 AA A
215/65R17	99T	8.7	6.50J	221	712	775	300	400 AA A
225/65R17	102T	8.7	6.50J	228	724	850	300	400 AA A
235/65R17	104T	8.7	7.00J	240	738	900	300	400 AA A
245/65R17	107T	9.5	7.00J	248	750	975	300	400 AA A
265/65R17	112T	9.5	8.00J	272	776	1120	300	400 AA A
275/65R17	115T	9.5	8.00J	279	790	1215	300	400 AA A
265/70R17	115T	9.5	8.00J	272	804	1215	300	400 AA A
235/55R18	100V	8.7	7.50J	245	715	725	300	400 AA A
225/60R18	100H	8.7	6.50J	228	727	800	300	400 AA A
235/60R18	103V	8.7	7.00J	240	739	875	300	400 AA A
255/55R18 XL	109V	9.5	8.00J	265	737	925	350	400 AA A
265/60R18 XL	114V	9.5	8.00J	272	775	1060	350	400 AA A
275/45R19 XL	108V	8.7	9.00J	273	731	1000	350	400 AA A
255/50R19 XL	107V	8.7	8.00J	265	739	975	350	400 AA A
275/40R20 XL	106V	8.7	9.50J	278	728	950	350	400 AA A
275/55R20 XL	117V	9.5	8.50J	284	810	1285	350	400 AA A



SU317

M+S

RIM SIZE	15 - 17
SERIES	60 - 75
SPEED RATING	T - H



Benefits and Features

- All season, comfort ride tyre designed for highway application
- Asymmetric tread design provides various functions in different parts and enables a quieter ride



SU317

Size	Speed Index	Tread Depth	Standard Rim	Section Width (mm)	Overall Diameter (mm)	Max. Load (kg)	Max. Air Pressure (kpa)	UTQG	
P215/75R15	100H	9.0	6.00J	216	703	800	300	450	A A
P235/75R15	105T	8.7	6.5J	235	733	925	300	600	A A
P215/65R16	98H	8.5	6.50J	221	686	750	300	450	A A
P215/70R16	100T	8.7	6.50J	221	708	800	300	600	A A
P225/70R16	103T	8.7	6.50J	228	722	875	300	600	A A
P235/70R16	106H	9.0	7.00J	240	736	950	300	450	A A
P245/70R16	107T	9.5	7.00J	248	750	975	300	600	A A
P265/70R16	112T	9.5	8.00J	272	778	1120	300	600	A A
P215/60R17	96H	8.7	6.50J	221	690	710	300	400	AA A
P225/65R17	102H	8.5	6.50J	228	724	850	300	450	A A
P235/65R17	104H	9.0	7.00J	240	738	900	300	450	A A
P245/65R17	107T	9.5	7.0J	248	750	975	300	600	A A



SV308

M+S

RIM SIZE	15 - 20
SERIES	30 - 55
SPEED RATING	H



Benefits and Features

- All season Silica-based compound for improving wet and dry traction without sacrificing tread wear
- RIM PROTECTOR protects the wheel rim and helps resist lateral deflection while providing superior handling control and enhanced cornering
- Circumferential V-groove promote proper water drainage without impacting cornering grip
- Solid center rib provides stable on-center feel and outstanding wet traction during cornering



Variable grooves and sipes optimizes the contact with road improve traction when cornering and reduces noises RIM PROTECTOR protect the wheel rim from unexpected damage
 V-groove design working with two circumferential groove ensures quick and efficient water evacuation



SV308

Size	Speed Index	Tread Depth	Standard Rim	Section Width (mm)	Overall Diameter (mm)	Max. Load (kg)	Max. Air Pressure (kpa)	UTQG
255/55R18	105H	8.0	6.00J	201	577	475	250	360 A A
265/60R18	110H	7.8	6.00J	194	585	475	300	360 A A
275/45R20	110H	8.0	6.00J	201	595	515	250	360 A A
285/50R20	112H	8.0	6.50J	214	612	545	350	360 A A
275/55R20	117H	8.0	7.00J	233	632	630	350	360 A A
265/35R22	98H	8.0	6.50J	214	632	670	350	360 A A
305/40R22	110H	8.0	7.00J	206	590	545	350	360 A A
305/45R22	118H	8.0	7.00J	226	642	730	350	360 A A
305/35R24	112H	8.0	7.00J	233	654	775	350	360 A A



SL369



SL369

M+S

RIM SIZE	15 - 18
SERIES	65 - 85
SPEED RATING	Q



Benefits and Features

- Wide tread and multi-stepped grooves increase surface area of tread to enhance traction on both on and off roads
- Zig-zag grooves offers efficient water drainage and enhanced traction on wet road
- Large tread blocks help enhanced stability and handling with less noise on highway
- Aggressive sidewall protectors increase off-road bite and prevent damage from sidewall cut and abrasions



Zig-zag Large blocks increase traction and stability on and off the roads



Stepped grooves help enhanced traction and tread stability with less noise
Sidewall protectors fight off unexpected sidewall cut and abrasion

Size	LR/PR	Speed Index	Tread Depth	Standard Rim	Section Width (mm)	Overall Diameter (mm)	Max. Load (kg)	Max. Air Pressure (kpa)	TT/TL
LT215/75R15	C/6PR	100/97Q	11.5	6.00J	216	703	800/730	350	TL
LT225/75R15	C/6PR	102/99Q	11.5	6.00J	223	719	850/775	350	TL
LT235/75R15	C/6PR	104/101Q	11.5	6.50J	235	733	900/825	350	TL
31x10.50R15	C/6PR	109Q	12.5	8.50J	268	775	1030	350	TL
LT225/75R16	E/10PR	115/112Q	11.0	6.00J	223	744	1215/1120	550	TL
LT245/75R16	E/10PR	120/116Q	12.5	7.00J	248	774	1380/1260	550	TL
LT265/75R16	E/10PR	123/120Q	12.5	7.50J	267	804	1550/1400	550	TL
LT285/75R16	D/8PR	122/119Q	12.8	8.00J	286	834	1500/1360	450	TL
LT285/75R16	E/10PR	126/123R	12.8	8.00J	286	834	1700/1550	450	TL
LT215/85R16	E/10PR	115/112Q	11.0	6.00J	216	772	1215/1120	550	TL
LT235/85R16	E/10PR	120/116Q	12.5	6.50J	235	806	1380/1260	550	TL
LT245/70R17	E/10PR	119/116Q	12.5	7.00J	248	776	1360/1250	550	TL
LT265/70R17	E/10PR	121/118Q	12.5	8.00J	272	804	1450/1320	550	TL
LT285/70R17	D/8PR	121/118Q	12.8	8.50J	292	832	1450/1320	450	TL
LT285/70R17	E/10PR	121/118R	12.8	8.50J	292	832	1450/1320	450	TL
LT245/75R17	E/10PR	121/118Q	12.5	7.00J	248	800	1450/1320	550	TL
LT235/80R17	E/10PR	120/117Q	12.5	8.50J	235	808	1400/1285	550	TL
LT275/65R18	E/10PR	123/120Q	12.8	8.00J	279	815	1550/1400	550	TL

Size	Speed Index	Tread Depth	Standard Rim	Section Width (mm)	Overall Diameter (mm)	Max. Load (kg)	Max. Air Pressure (kpa)	UTQG
P215/75R15	100S	9.5	6.00J	216	703	800	300	500 A A
P235/70R16	106S	9.5	7.00J	240	736	950	300	500 A A
205/80R16	XL 104S	10.0	5.50J	203	734	900	280	440 A A
215/80R16	XL 107S	10.0	6.00J	216	750	975	280	440 A A



SL366

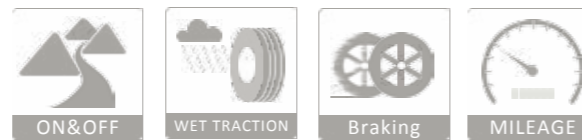
Size	LR/PR	Speed Index	Tread Depth	Standard Rim	Section Width (mm)	Overall Diameter (mm)	Max. Load (kg)	Max. Air Pressure (kpa)	TT/TL
31x10.50R15	C/6PR	109Q	14.3	8.50J	268	775	1030	350	TL
LT245/75R16	E/10PR	120/116Q	14.3	7.00J	248	774	1380/1260	550	TL
LT265/75R16	E/10PR	123/120Q	14.3	7.50J	267	804	1550/1400	550	TL



SL366

M+S

RIM SIZE	15 - 16
SERIES	75
SPEED RATING	Q



NEW

Benefits and Features

- Especially designed for unpaved tough roads
- Reinforced sidewall and large sparse bold blocks helps to give off muds and studs at high or low speed
- Perfect grip on tough surfaces such as mud and sand



1. Zig-zag sipes improve wet traction and braking ability
2. Special groove protection design offers enhanced durability to resist stone punctuation
3. Various shoulder blocks promote driving and handling performance on tough roads



Large blocks deliver superior traction force in forest, hills and countryside



Large shoulder provides anti-puncture ability effectively



SL309

M+S

RIM SIZE	15 - 18
SERIES	65 - 85
SPEED RATING	Q



Benefits and Features

All-season tread design with long tread life

- Double-ply casing construction handles heavy loads at highway speed and delivers outstanding durability
- Double steel belts plies and double full jointless nylon cap plies improve handling stability and durability
- Wide circumferential grooves helps to evacuate water quickly and efficiently



Zig-zag grooves offers enhanced traction in rain and snow
Large shoulder blocks provide strength and stiffness for outstanding cornering



SL309

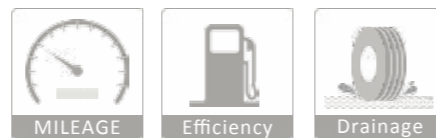
Size	LR/PR	Speed Index	Tread Depth	Standard Rim	Section Width (mm)	Overall Diameter (mm)	Max. Load (kg)	Max. Air Pressure (kpa)	TT/TL
31×10.50R15	C/6PR	109Q	10.0	8.50J	268	775	1030	350	TL
LT215/75R15	C/6PR	100/97Q	9.0	6.00J	216	703	800/730	350	TL
LT235/75R15	C/6PR	104/101Q	8.7	6.50J	235	733	900/825	350	TL
185/75R16C	D/8PR	104/102R	9.0	5.00J	184	684	900/850	475	TL
LT225/75R16	E/10PR	115/112Q	9.5	6.00J	223	744	1215/1120	550	TL
LT245/75R16	E/10PR	120/116Q	10.5	7.00J	248	774	1380/1260	550	TL
LT265/75R16	E/10PR	123/120Q	10.5	7.50J	267	804	1550/1400	550	TL
LT285/75R16	D/8PR	122/119Q	10.5	8.00J	286	834	1500/1360	450	TL
LT215/85R16	E/10PR	115/112Q	9.0	6.00J	216	772	1215/1120	550	TL
LT235/85R16	E/10PR	120/116Q	10.5	6.50J	235	806	1380/1260	550	TL
LT245/70R17	E/10PR	119/116Q	12.5	7.00J	248	776	1360/1250	550	TL
LT265/70R17	E/10PR	121/118Q	11.8	8.00J	272	804	1450/1320	550	TL
LT285/70R17	D/8PR	121/118Q	12.8	8.50J	292	832	1450/1320	450	TL
LT245/75R17	E/10PR	121/118Q	12.5	7.00J	248	800	1450/1320	550	TL
LT235/80R17	E/10PR	120/117Q	12.5	8.50J	235	808	1400/1285	550	TL
LT275/65R18	E/10PR	123/120Q	11.7	8.00J	279	815	1550/1400	550	TL



SL325

M+S

RIM SIZE	15 - 16
SERIES	75 - 85
SPEED RATING	Q



Benefits and Features

- Double-ply casing construction designed for heavy loads at highway speed with outstanding durability
- Double steel belts plies and double full jointless nylon cap plies creates layers of strength bearing heavy loads with superior stability
- Hard rubber extra long bead filler increases stability to carry heavy loads



Zig-zag grooves offers enhanced traction in rain and snow

Half-stepped sinew ensures comfort ride



SL325

Size	LR/PR	Speed Index	Tread Depth	Standard Rim	Section Width (mm)	Overall Diameter (mm)	Max. Load (kg)	Max. Air Pressure (kpa)	TT/TL
31×10.50R15	C/6PR	109Q	11.0	8.50J	268	775	1030	350	TL
LT235/75R15	C/6PR	104/101Q	9.7	6.50J	235	733	900/825	350	TL
LT225/75R16	E/10PR	115/112Q	10.5	6.00J	223	744	1215/1120	550	TL
LT245/75R16	E/10PR	120/116Q	10.5	7.00J	248	774	1380/1260	550	TL
LT265/75R16	E/10PR	123/120Q	11.5	7.50J	267	804	1550/1400	550	TL
LT285/75R16	D/8PR	122/119Q	11.5	8.00J	286	834	1500/1360	450	TL
LT215/85R16	E/10PR	115/112Q	10.0	6.00J	216	772	1215/1120	550	TL
LT235/85R16	E/10PR	120/116Q	10.5	6.50J	235	806	1380/1260	550	TL



CR857

Size	LR/PR	Speed Index	Tread Depth	Standard Rim	Section Width (mm)	Overall Diameter (mm)	Max. Load (kg)	Max. Air Pressure (kpa)	TT/TL
31x10.50R15	C/6PR	109Q	12.0	8.50J	268	775	1030	350	TL
LT235/75R15	C/6PR	104/101Q	12.0	6.50J	235	733	900/825	350	TL
LT245/75R16	E/10PR	120/116L	14.0	7.00J	248	774	1380/1260	550	TL
LT265/75R16	E/10PR	123/120L	14.0	7.50J	267	804	1550/1400	550	TL
LT235/85R16	E/10PR	120/116L	14.0	6.50J	235	806	1380/1260	550	TL



CR857

M+S

RIM SIZE	15 - 16
SERIES	75 - 85
SPEED RATING	Q



Benefits and Features

- Bold, off-road attitude combined with exceptional on-road performance
- Staggered center blocks create more biting edges helping improve off-road performance
- Studdable for outstanding traction and braking performance on snow and icy roads



The design of separated blocks satisfies requirement of cross-country capacity



Sturdy shoulder blocks ensure the driving performance while turning



SC328

M+S

RIM SIZE	14 - 16
SERIES	65 - 75
SPEED RATING	Q - T



Benefits and Features

- Wide four ribs add miles to tread life
- Zig-zag grooves offers enhanced traction on wet road
- Combination construction of polyester casing and steel belts provide outstanding durability



Double-ply casing construction designed for heavy loads at highway speed with outstanding durability

Double steel belts plies and double full jointless nylon cap plies creates layers of strength bearing heavy loads with superior stability



SC328

Size	LR/PR	Speed Index	Tread Depth	Standard Rim	Section Width (mm)	Overall Diameter (mm)	Max. Load (kg)	Max. Air Pressure (kpa)	TT/TL
185R14C	D/8PR	102/100 Q	9.8	5.50J	188	650	850/800	450	TL
195R14C	D/8PR	106/104Q	9.5	5.50J	198	666	950/900	450	TL
205R14C	D/8PR	109/107R	9.8	6.00J	208	686	1030/975	450	TL
215/75R14C	D/8PR	112/110Q	9.8	6.00J	216	678	1120/1060	475	TL
185R15C	D/8PR	103/102R	9.8	5.50J	188	674	875/850	450	TL
195/70R15C	D/8PR	104/102 R	9.5	6.00J	201	655	900/850	450	TL
205/70R15C	D/8PR	106/104R	9.5	6.00J	209	669	950/900	475	TL
215/70R15C	D/8PR	109/107R	9.5	6.50J	221	683	1030/975	475	TL
225/70R15C	D/8PR	112/110 R	9.8	6.50J	228	697	1120/1060	450	TL
195/65R16C	D/8PR	104/102T	9.5	6.00J	201	660	900/850	475	TL
205/65R16C	D/8PR	107/105T	9.5	6.00J	209	672	975/925	475	TL
215/65R16C	D/8PR	109/107R	9.8	6.50J	221	686	1030/975	475	TL
225/65R16C	D/8PR	112/110R	9.8	6.50J	228	698	1120/1060	475	TL
235/65R16C	D/8PR	115/113R	9.8	7.00J	240	712	1215/1150	475	TL
195/75R16C	D/8PR	107/105R	9.5	5.50J	196	698	975/925	475	TL



SL305

M+S

RIM SIZE	12 - 14
SERIES	70 - 80
SPEED RATING	Q - S



MILEAGE



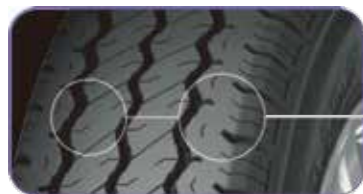
WET TRACTION



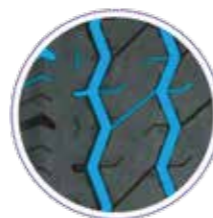
Efficiency

Benefits and Features

- Special design for mini-van and compact cars
- Combination construction of polyester casing and steel belts provide outstanding durability
- Long tire life provides remarkable value for the end users



Wide tread enables outstanding tire performance and precise handling



High density Zig-Zag grooves and deep tread depth ensures longer tire life



SL305

Size	LR/PR	Speed Index	Tread Depth	Standard Rim	Section Width (mm)	Overall Diameter (mm)	Max. Load (kg)	Max. Air Pressure (kpa)	TT/TL
155R12C	C/6PR	83/81Q	8.5	4.50B	157	553	487/462	350	TL
LT165/70R13	C/6PR	88/86S	9.0	5.00B	170	562	560/530	375	TL
155R13LT	D/8PR	90/88S	8.5	4.50B	157	578	600/560	450	TL
165R13LT	D/8PR	94/92Q	9.0	4.50B	165	594	670/630	450	TL
175R13LT	D/8PR	97/95Q	9.0	5.00B	177	610	730/690	450	TL
LT165/70R14	C/6PR	89/87R	9.0	5 J	170	588	580/545	375	TL
LT175/70R14	C/6PR	95/93S	8.5	5.0J	177	602	690/650	375	TL
185R14C	D/8PR	102/100Q	9.5	5.5 J	189	652	850/800	450	TL
195R14C	D/8PR	106/104Q	9.5	5.5 J	196	668	950/900	450	TL



SC301

M+S

RIM SIZE	14 - 16
SERIES	60 - 75
SPEED RATING	Q - T



Benefits and Features

- Double-ply casing construction handles heavy loads with superior durability
- Heavy duty steel belts plies delivers handling stability and puncture resistance
- Tightly siped pattern creates self supporting independent tread blocks for even wearing



High-density pattern design



Reinforced sidewall with robust casing will provide sufficient support to commercial vehicle



SC301

Size	LR/PR	Speed Index	Tread Depth	Standard Rim	Section Width (mm)	Overall Diameter (mm)	Max. Load (kg)	Max. Air Pressure (kpa)	TT/TL
185R14C	D/8PR	102/100Q	7.8	5.50J	188	650	850/800	450	TL
195R14C	D/8PR	106/104Q	7.9	5.50J	198	666	950/900	450	TL
205R14C	D/8PR	109/107Q	8.0	6.00J	208	686	1030/975	450	TL
LT205/70R14	D/8PR	100/97R	9.0	6.00J	209	644	800/730	450	TL
215/75R14C	D/8PR	112/110Q	8.3	6.00J	216	678	1120/1060	475	TL
185R15C	D/8PR	103/102Q	7.8	5.50J	188	674	875/850	450	TL
205/65R15C	C/6PR	102/100T	8.0	6.00J	209	647	850/800	375	TL
195/70R15C	D/8PR	104/102R	7.9	6.00J	201	655	900/850	450	TL
205/70R15C	C/6PR	104/102S	8.0	6.00J	209	669	900/850	375	TL
215/70R15C	C/6PR	106/104R	8.3	6.50J	221	683	950/900	375	TL
225/70R15C	D/8PR	112/110R	8.5	6.50J	228	697	1120/1060	475	TL
215/60R16C	D/8PR	108/106T	8.3	6.50J	221	664	1000/950	475	TL



ST303

M+S

RIM SIZE	15 - 16
SERIES	-
SPEED RATING	N



Benefits and Features

- Five rib design for improved handling and wet traction
- Combination of polyester casing and steel belts increases durability
- Wide tread width and low-heating compound ensure longer tire life



The design of 4-channel will ensure driving stability



Wider tread width with reinforced shoulder is sufficient guarantee of high load capacity and long mileage



ST303

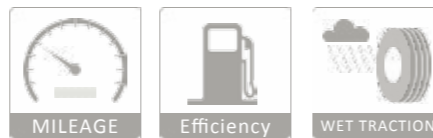
Size	LR/PR	Speed Index	Tread Depth	Standard Rim	Section Width (mm)	Overall Diameter (mm)	Max. Load (kg)	Max. Air Pressure (kpa)	TT/TL
6.50R15	E/10PR	107/105N	9.5	5.50F	180	730	975/925	560	TT/TL
7.00R15	E/10PR	110/106N	11.0	5.50F	200	750	1040/915	560	TT/TL
6.50R16	E/10PR	108/107N	9.5	5.50F	185	750	1000/975	560	TT/TL
7.00R16	F/12PR	117/116N	10.0	5.50F	200	775	1285/1250	670	TT/TL



ST313

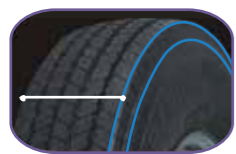
M+S

RIM SIZE	15 - 16
SERIES	-
SPEED RATING	L - N



Benefits and Features

- Applicable for mini-bus, van and commercial light trucks
- Strong sidewall design enables high durability and fights off cuts and abrasion in city roads
- Triply polyester belts plies creates strength bearing heavy loads with superior stability



Improved tread width and tire shoulder provides outstanding tire durability and loading capacity



4 Zig-zag grooves enable excellent performance on paved roads



Enhanced shoulder provides better support and ensures good performance

Triply design and enhanced bead ensure casing durability

Low rolling resistance compound provides better fuel efficiency



ST313

Size	LR/PR	Speed Index	Tread Depth	Standard Rim	Section Width (mm)	Overall Diameter (mm)	Max. Load (kg)	Max. Air Pressure (kpa)	TT/TL
6.50R15	D/8PR	101/97N	11.5	5.50F	180	730	825/730	460	TT/TL
7.00R15	E/10PR	110/106N	12.0	5.50F	200	750	1060/950	560	TT/TL
6.50R16	E/10PR	108/107N	11.5	5.50F	185	750	1000/975	560	TT/TL
7.00R16	F/12PR	117/116N	12.0	5.50F	200	775	1285/1250	670	TT/TL
7.50R16	G/14PR	122/121L	12.0	6.00G	220	808	1500/1450	740	TT/TL



CR869

Size	LR/PR	Speed Index	Tread Depth	Standard Rim	Section Width (mm)	Overall Diameter (mm)	Max. Load (kg)	Max. Air Pressure (kpa)	TT/TL
7.50R16	G/14PR	122/121L	11.5	6.00G	220	808	1500/1450	740	TT/TL



H120

Size	LR/PR	Speed Index	Tread Depth	Standard Rim	Section Width (mm)	Overall Diameter (mm)	Max. Load (kg)	Max. Air Pressure (kpa)	TT/TL
155R12C	C/6PR	83/81Q	8.0	4.50B	157	553	487/462	350	TL
155R13C	D/8PR	90/88Q	8.0	4.50B	157	578	600/560	450	TL
165R13C	D/8PR	94/92Q	8.0	4.50B	165	594	670/630	450	TL



H160

Size	LR/PR	Speed Index	Tread Depth	Standard Rim	Section Width (mm)	Overall Diameter (mm)	Max. Load (kg)	Max. Air Pressure (kpa)	TT/TL
185R14C	D/8PR	102/100Q	8.5	5.5 J	189	652	850/800	450	TL



H170

Size	LR/PR	Speed Index	Tread Depth	Standard Rim	Section Width (mm)	Overall Diameter (mm)	Max. Load (kg)	Max. Air Pressure (kpa)	TT/TL
195R14C	D/8PR	106/104Q	9.0	5.50J	198	666	950/900	450	TL
175/75R16C	D/8PR	101/99Q	8.5	5.00J	177	668	825/775	475	TL
205/75R16C	D/8PR	110/108Q	10.5	5.50J	203	714	1030/1000	475	TL
215/75R16C	D/8PR	113/111Q	9.0	6.00J	216	728	1150/1090	475	TL



H200

Size	LR/PR	Speed Index	Tread Depth	Standard Rim	Section Width (mm)	Overall Diameter (mm)	Max. Load (kg)	Max. Air Pressure (kpa)	TT/TL
145R12C	C/6PR	81/79N	8.0	4.00B	145	537	462/437	350	TL
145R12C	D/8PR	86/84Q	8.0	4.00B	145	537	530/500	450	TL
155R12C	C/6PR	83/81Q	8.0	4.50B	157	553	487/462	350	TL



SW601

M+S

RIM SIZE	13 - 17
SERIES	45 - 80
SPEED RATING	T - H



Benefits and Features

- Asymmetrical tread design provides balanced performance across driving conditions
- Special zigzag sipes help maintain block rigidity and create more biting edges for enhanced snow and ice traction
- Circumferential high-drainage grooves drain snow, slush, and water, maximizing the tire's contact with the road surface



Asymmetrical pattern design



SW601

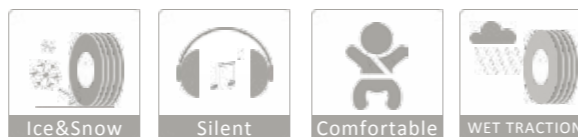
Size	Speed Index	Tread Depth	Standard Rim	Section Width (mm)	Overall Diameter (mm)	Max. Load (kg)	Max. Air Pressure (kpa)	TT/TL
165/70R13	79T	7.5	5.00B	170	562	437	300	TL
175/70R13	82T	7.5	5.00B	177	576	475	350	TL
155/80R13	79T	7.5	4.50B	157	578	437	300	TL
185/60R14	82H	7.8	5.50J	189	578	475	350	TL
185/60R14	82T	7.8	5.50J	189	578	475	350	TL
195/60R14	86H	7.8	6.00J	201	590	530	300	TL
175/65R14	82H	7.5	5.00J	177	584	475	350	TL
175/65R14	82T	7.5	5.00J	177	584	475	350	TL
185/65R14	86H	7.8	5.50J	189	596	530	350	TL
185/65R14	86T	7.8	5.50J	189	596	530	350	TL
165/70R14	81T	7.5	5.00J	170	588	462	300	TL
175/70R14	84T	7.5	5.00J	177	602	500	300	TL
185/70R14	88T	7.8	5.50J	189	616	560	300	TL
195/70R14	91T	7.8	6.00J	201	630	615	300	TL
195/55R15	89H	8.0	6.00J	201	595	580	350	TL
185/60R15	84H	7.8	5.50J	189	603	500	300	TL
185/60R15 XL	88H	7.8	5.50J	189	603	560	350	TL
185/65R15	88H	7.8	5.50J	189	621	560	350	TL
195/65R15	91H	7.9	6.00J	201	635	615	350	TL
195/65R15 XL	95T	7.9	6.00J	201	635	615	350	TL
205/65R15	94H	8.0	6.00J	209	647	670	350	TL
205/70R15	96H	8.0	6.00J	209	669	710	350	TL
215/70R15	98H	8.2	6.50J	221	683	750	350	TL
205/55R16	91H	8.0	6.50J	214	632	615	350	TL
215/55R16	97H	8.0	7.00J	226	642	730	300	TL
225/55R16	99H	8.2	7.00J	233	654	775	350	TL
205/60R16	92H	8.0	6.00J	209	652	630	300	TL
215/60R16	95H	8.1	6.50J	221	664	690	300	TL
215/60R16 XL	99H	8.1	6.50J	221	664	775	350	TL
225/60R16	98H	8.2	6.50J	228	676	750	350	TL
215/65R16	98H	8.2	6.50J	221	686	750	300	TL
225/45R17	94H	8.2	7.50J	225	634	670	300	TL



SW602

M+S

RIM SIZE	13 - 17
SERIES	45 - 70
SPEED RATING	T - H



Benefits and Features

- V-shaped tread design delivers exceptional traction and control in all winter driving conditions
- Stiff shoulder blocks deliver outstanding cornering stability and enhanced grips
- Unique winter tread compound offers performance driving



SW602

Size	Speed Index	Tread Depth	Standard Rim	Section Width (mm)	Overall Diameter (mm)	Max. Load (kg)	Max. Air Pressure (kpa)	TT/TL
175/70R13	82T	7.5	5.00B	177	576	475	350	TL
185/60R14	82H	8.0	5.50J	189	578	475	350	TL
195/60R14	86H	7.8	6.00J	201	590	530	300	TL
175/65R14	82H	7.5	5.00J	177	584	475	350	TL
185/65R14	86H	7.8	5.50J	189	596	530	350	TL
165/70R14	81T	7.5	5.00J	170	588	462	300	TL
175/70R14	84T	7.5	5.00J	177	602	500	300	TL
195/60R15	88H	7.9	6.00J	201	615	560	300	TL
185/65R15	88H	7.8	5.50J	189	621	560	350	TL
195/65R15	91H	7.9	6.00J	201	635	615	300	TL
195/65R15 XL	95T	7.9	6.00J	201	635	690	350	TL
205/65R15	94H	8.0	6.00J	209	647	670	350	TL
205/70R15	96H	8.0	6.00J	209	669	710	350	TL
215/70R15	98H	8.2	6.50J	221	683	750	350	TL
205/55R16	91H	8.0	6.50J	214	632	615	350	TL
215/55R16	97H	8.0	7.00J	226	642	730	300	TL
225/60R16	98H	8.2	6.50J	228	676	750	350	TL
215/65R16	98H	8.2	6.50J	221	686	750	300	TL
225/45ZR17	94H	8.2	7.50J	225	634	670	300	TL



SW606

M+S

RIM SIZE	14 - 17
SERIES	55 - 70
SPEED RATING	T



Benefits and Features

- Studdable V-shaped tread design delivers outstanding traction and braking performance on snow and icy roads
- Stiff shoulder blocks deliver outstanding cornering stability and enhanced grips



Studdable V-shaped pattern



SW606

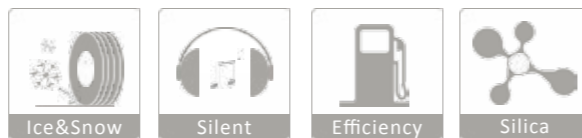
Size	Speed Index	Tread Depth	Standard Rim	Section Width (mm)	Overall Diameter (mm)	Max. Load (kg)	Max. Air Pressure (kpa)	TT/TL
185/60R14	82T	10.5	5.50J	189	578	475	300	TL
175/65R14	82 T	10.2	5.00J	177	584	475	300	TL
185/65R14	86T	10.5	5.50J	189	596	530	300	TL
185/70R14	88T	10.5	5.50J	189	616	560	300	TL
195/70R14	91T	10.5	6.00J	201	630	615	300	TL
185/60R15	84T	10.5	5.50J	189	603	500	300	TL
195/60R15	88T	10.5	6.00J	201	615	560	300	TL
185/65R15	88T	10.5	5.50J	189	621	560	300	TL
195/65R15	91T	10.5	6.00J	201	635	615	300	TL
205/65R15	94T	10.5	6.00J	209	647	670	300	TL
215/70R15	98T	10.5	6.50J	221	683	750	300	TL
205/55R16	91T	10.5	6.50J	214	632	615	300	TL
215/60R16	95T	10.5	6.50J	221	664	690	300	TL
225/60R16	98T	10.5	6.50J	228	676	750	300	TL
215/70R16	100T	10.5	6.50J	221	708	800	300	TL
235/70R16	106T	10.5	7.00J	240	736	950	300	TL
225/60R17	99T	10.5	6.50J	228	702	775	300	TL
225/65R17	102T	10.5	6.50J	228	724	850	300	TL



SW608

M+S

RIM SIZE	13 - 17
SERIES	45 - 80
SPEED RATING	T - H



Benefits and Features

- V-shaped tread design works with high-drainage groove to drain snow, slush and water quickly
- Optimized direction of sipes maximize the tire's contact with the road surface and delivers outstanding traction and control in all winter driving conditions
- Special winter tread compound offers performance driving



Studdable V-shaped pattern



SW608

Size	LR/PR	Speed Index	Tread Depth	Standard Rim	Section Width (mm)	Overall Diameter (mm)	Max. Load (kg)	Max. Air Pressure (kpa)	TT/TL
155/70R13		75T	7.3	4.50B	157	548	387	300	TL
165/70R13		79T	8.5	5.00B	170	562	437	300	TL
175/70R13		82T	7.5	5.00B	177	576	475	300	TL
155/80R13		79T	7.5	4.50B	157	578	437	300	TL
185/60R14		82H	7.8	5.50J	189	578	475	300	TL
155/65R14		75T	7.5	4.5B	157	558	387	300	TL
175/65R14		82H	7.5	5.00J	177	584	475	300	TL
185/65R14		86H	7.8	5.50J	189	596	530	300	TL
165/70R14		81T	7.5	5.00J	170	588	462	300	TL
175/70R14		84T	7.5	5.00J	177	602	500	300	TL
185/70R14		88T	7.8	5.50J	189	616	560	300	TL
195/60R15		88H	7.9	6.00J	201	615	560	300	TL
175/65R15		84T	7.5	5.00J	177	609	500	300	TL
185/65R15		88H	7.8	5.50J	189	621	560	300	TL
195/65R15		91H	7.9	6.00J	201	635	615	300	TL
205/65R15		94H	8.0	6.00J	209	647	670	300	TL
215/70R15		98H	8.2	6.50J	221	683	750	300	TL
195/55R16		87H	8.0	6.00J	201	620	545	350	TL
205/55R16		91H	8.0	6.50J	214	632	670	300	TL
205/60R16		92H	8.0	6.00J	209	652	630	300	TL
225/60R16		98H	8.2	6.50J	228	676	750	300	TL
215/65R16		98H	8.2	6.50J	221	686	750	300	TL
195/55R15 XL		89H	8.0	6.00J	201	595	580	350	TL
185/60R15 XL		88H	7.8	5.50J	189	603	560	350	TL
215/55R16 XL		97H	8.0	7.00J	226	642	730	350	TL
225/55R16 XL		99H	8.2	7.00J	233	654	775	350	TL
215/60R16 XL		99H	8.1	6.50J	221	664	690	350	TL
225/45R17 XL		94H	8.2	7.50J	225	634	670	350	TL
235/45R17 XL		97H	8.2	8.00J	236	644	730	350	TL
205/50R17 XL		93H	8.0	6.50J	214	638	650	350	TL
225/50R17XL		98H	8.5	7.00J	233	658	750	350	TL
185R14C	D/8PR	102/100Q	8.5	5.50J	188	650	850/800	450	TL
195/70R15C	D/8PR	104/102R	9.0	6.00J	201	655	900/850	450	TL



SW612

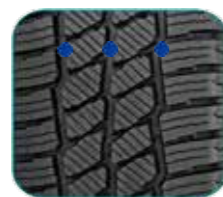
M+S

RIM SIZE	15 - 16
SERIES	60 - 75
SPEED RATING	N - T



Benefits and Features

- All-round winter performance for vans and other commercial vehicles
- Remarkable safety through excellent grip, handling and traction in snow, mud and wet surface
- Comfortable ride and precise handling with long tread life
- Complied with latest EU regulations



Three Zig-Zag grooves enhance traction on snow, mud and wet surface



SW612

Size	LR/PR	Speed Index	Tread Depth	Standard Rim	Section Width (mm)	Overall Diameter (mm)	Max. Load (kg)	Max. Air Pressure (kpa)	TT/TL
6.50R16	E/10PR	108/107N	11.5	5.50F	185	750	1000/975	560	TL
7.00R16	F/12PR	117/116N	12.0	5.50F	200	775	1285/1250	670	TL
205/65R15C	C/6PR	102/100T	10.0	6.00J	209	647	850/800	375	TL
205/70R15C	D/8PR	106/104R	10.0	6.00J	209	669	950/900	450	TL
215/70R15C	D/8PR	109/107R	10.0	6.50J	221	683	1030/975	450	TL
225/70R15C	D/8PR	112/110R	10.5	6.50J	228	697	1120/1060	450	TL
195/60R16C	C/6PR	99/97T	10.0	6.00J	201	640	775/730	375	TL
195/65R16C	D/8PR	104/102T	10.0	6.00J	201	660	900/850	475	TL
205/65R16C	D/8PR	107/105T	10.0	6.00J	209	672	975/925	475	TL
215/65R16C	D/8PR	109/107R	9.2	6.50J	221	686	1030/975	475	TL
225/65R16C	D/8PR	112/110R	10.5	6.50J	228	698	1120/1060	475	TL
235/65R16C	D/8PR	115/113R	10.5	7.00J	240	712	1215/1150	475	TL
195/75R16C	D/8PR	107/105R	10.0	5.50J	196	698	975/925	475	TL



STZC



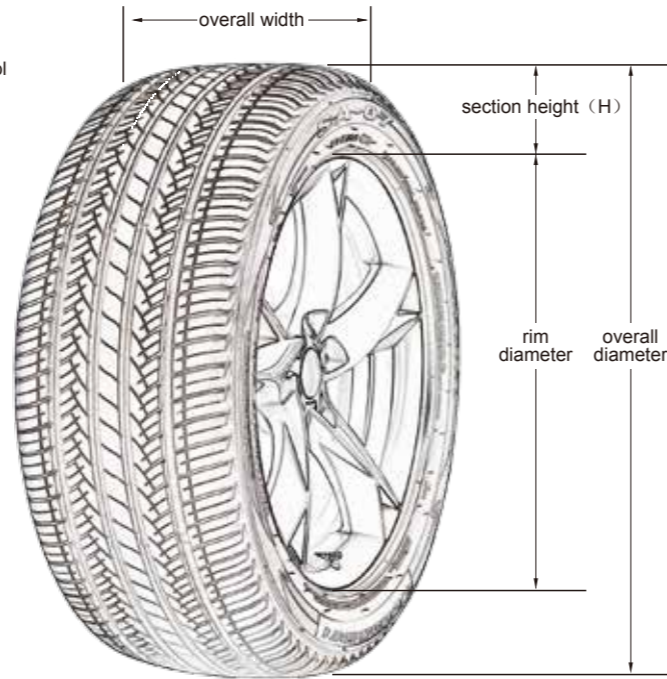
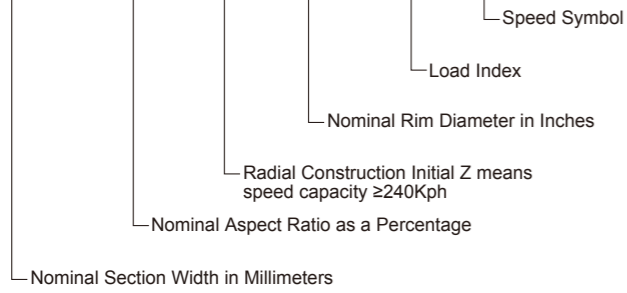
CR960A

Size	PR	Speed Index	Tread Depth	Standard Rim	Section Width (mm)	Overall Diameter (mm)	Max. Load (kg)	Max. Air Pressure (kpa)
ST175/80R13	C/6	7.5	9.5	5.00	177	610	615	350
ST205/75R14	C/6	7.8	10	5.50	203	664	800	350
ST215/75R14	C/6	7.5	9.5	6.00	216	678	850	350
ST205/75R15	C/6	7.8	10	5.50	203	689	825	450
ST205/75R15	D/8	7.8	10	5.50	203	689	975	450
ST225/75R15	D/8	8.2	10	6.00	223	719	1150	450
ST225/75R15	E/10	8.2	10	6.00	223	719	1280	550
ST235/80R16	E/10	8.2	10	6.50	235	782	1600	550

Size	PR	Tread Depth	Standard Rim	Section Width (mm)	Overall Diameter (mm)	Tyre Load Index	SINGLE				DUAL			
							kg	LBS	kPa	PSI	kg	LBS	kPa	PSI
ST235/85R16	G/14	10.5	6 1/2J	235	806	129/125L	1850	4080	760	110	1650	3640	760	110

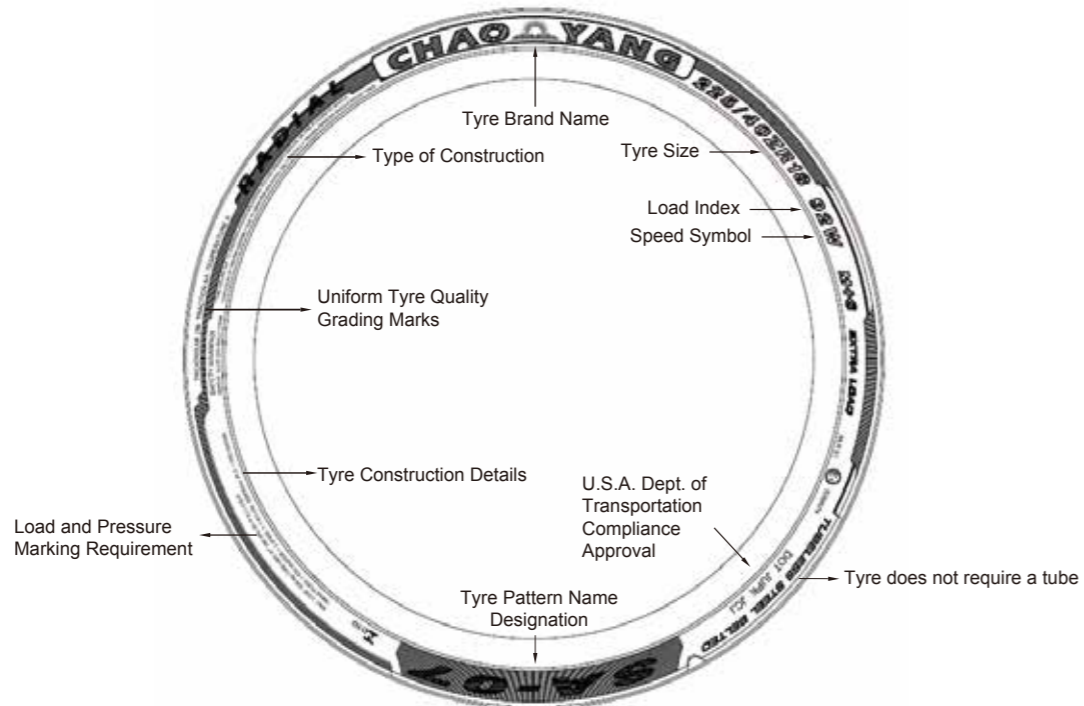
TECHNICAL KNOWLEDGE

225/40ZR18 92W



$$\text{Aspect ratio (\%)} = \frac{\text{Section Height}}{\text{Section Width}} \times 100$$

SIDEWALL INSTRUCTION



OTHER MARKINGS:

- P** – as part of the tyre size designation (e.g., P265/70R15) used to indicate tires intended for services on passenger cars.
- LT** – as part of the tyre size designation (e.g., LT235/75R15) used to indicate the tires are intended for light truck vehicles.
- M&S** – letters used to indicate a tyre suitable for Mud and Snow and/or All Season usage.
- XL** – as part of the tyre size designation (e.g., 225/55R16 XL) used to indicate the tyre can carry more loads as the maximum inflation pressure and load are greater than a standard load version. (Also could be called REINFORCED).
- ZR** - as part of the tyre size designation (e.g., 225/45ZR17 XL) used to indicate the tyre has a maximum speed capability over Kph.≥240Kilometer.

SPEED RATING

The speed symbol refers to the maximum speed capabilities of the tyre. It is only valid for tyre that are properly inflated and loaded within their assigned load index.

Speed Rating	N	P	Q	R	S	T	U	H	V	W	Y	ZR
Max. Kph. (Kilometer/hour)	140	150	160	170	180	190	200	210	240	270	300	Kph. ≥ 240 Kilometer

LOAD INDEX

The load index is the maximum load-carrying capacity of a tyre under a specific condition.

LI	Kg	LI	Kg	LI	Kg	LI	Kg
50	190	70	335	90	600	110	1060
51	195	71	345	91	615	111	1090
52	200	72	355	92	630	112	1120
53	206	73	365	93	650	113	1150
54	212	74	375	94	670	114	1180
55	218	75	387	95	690	115	1215
56	224	76	400	96	710	116	1250
57	230	77	412	97	730	117	1285
58	236	78	425	98	750	118	1320
59	243	79	437	99	775	119	1360
60	250	80	450	100	800	120	1400
61	257	81	462	101	825	121	1450
62	265	82	475	102	850	122	1500
63	272	83	487	103	875	123	1550
64	280	84	500	104	900	124	1600
65	290	85	515	105	925	125	1650
66	300	86	530	106	950	126	1700
67	307	87	545	107	975	127	1750
68	315	88	560	108	1000	128	1800
69	325	89	580	109	1030	129	1850

TYRE UPGRADE

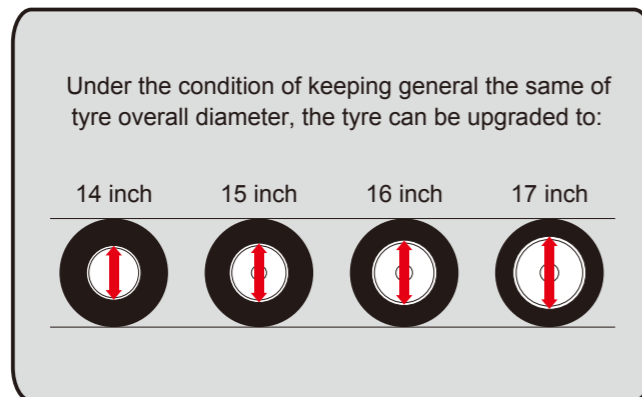
“Tire Upgrade” means : increase of rim diameter without changing of tyre overall diameter, the trend in development of low aspect ratio is called upgrade.

INCREASE OF SPORTY PERFORMANCE

The tyre response will be more sensitive when you turn the steering wheel that the flex of tyre will be reduced, and the performance of steering and handling stability will be better, especially under medium and high speed driving.

ENHANCEMENT OF BRAKING ABILITY

The braking stability will be improved due to the decrease of tyre flex when you brake.



Please refer to the clarifications set forth below to upgrade the tyre:

- Without any particular reason, please do not change the overall diameter of tyre easily. The alternation of tyre overall diameter will cause misreading of speedometer or mutual interference between tyre and other parts of vehicle.
- Please determine the width of tyre in accordance with the specific width of vehicle. If the width of the entire tyre is increased overly, it will cause mutual interference between tyre and other parts of vehicle, even heading out of the tyre from bodywork which will initiate danger.
- Notice the load index of vehicle when you upgrade the tyre. There is rule to the weight which the tyre can bear (load index) for each size. Please refer to the load index when you chose the proper size.

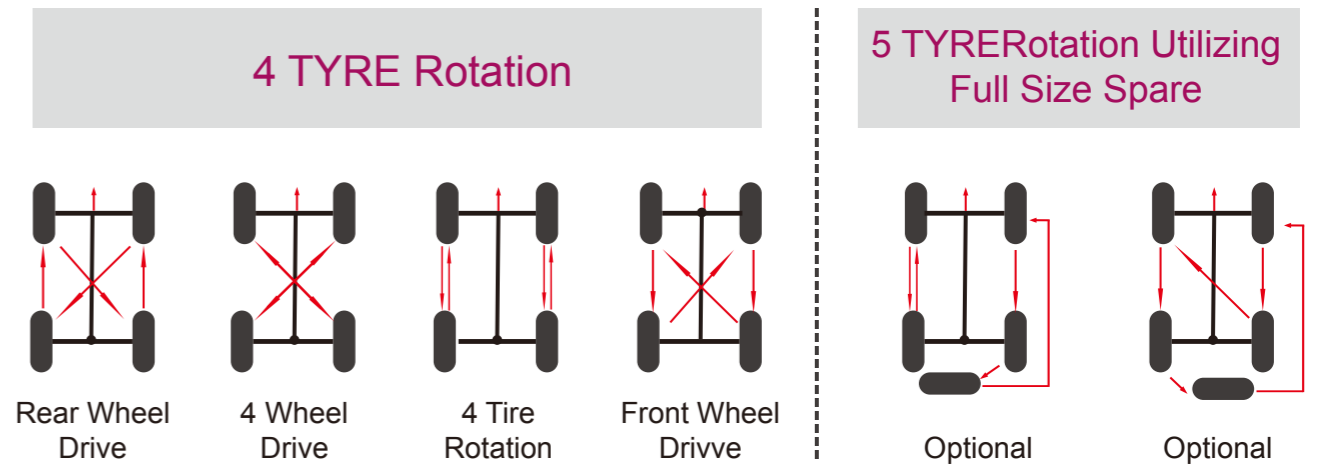
TYRE ROTATION AND INFLATION

TYRE ROTATION

The purpose for rotating tyres is to achieve a more uniform wear for all tyres on a vehicle. Before rotating tyres, determine the cause of any unusual wear and correct any misalignment, imbalance, or other mechanical problems. Otherwise it will cause: 1. Ride disturbing; 2. More noise; 3. Poor ride comfort; 4. Shorter of life span.

Note: it is suggested that tires should be rotated as soon as the phenomena above mentioned are detected (especially the two front wheels). These tire rotation recommendation do not take into account different tire types mixed on the same vehicle. Do not mix radial and bias ply tires on the same vehicle.

The tire rotation patterns are acceptable below. Please refer to your vehicle owner's manual regarding tire rotation advice.



TYRE INFLATION

One of the most important aspects of tire maintenance is proper inflation.

Sufficient inflation is needed to carry the load and avoid damage. Driving with improper inflation (particularly grossly under inflated or over inflated tyres) is dangerous and can cause critical damage or sudden failure of the tyre(s). Proper inflation should be maintained and check on at least weekly bases and before long distance drives.

Proper inflation should be maintained and checked at least once a week and before a long distance drive.

It is also advisable to take into account axle load and driving conditions when setting inflation pressure. Compensation for heavier loads can be made by increasing inflation pressure, but do not exceed maximum inflation for the tyre or maximum axle load.

In the space of just one month, a tyre can lose 10 pounds of air pressure.

It is important to check your air pressure regularly, to make sure your tyres are neither under nor over inflated.

Under-inflation

Is the worst enemy your tyre can have. It causes increased treadwear on the outside edges (or shoulders) of the tyre. It also generates excessive heat, which reduces tyre durability. Finally it reduces your fuel economy by increasing rolling resistance-soft tyres make your vehicle work harder.

Over-inflation

Is also detrimental to the tyre. Too much air pressure causes the center of the tread to bear the majority of the truck's weight, which leads to faster deterioration and uneven wear. Any kind of uneven wear will shorten the lifespan of your tyres.

One of the most important aspects of tire maintenance is proper inflation.

Sufficient inflation is needed to carry the load and avoid damage. Driving with improper inflation (particularly grossly under inflated or over inflated tyres) is dangerous and can cause critical damage or sudden failure of the tyre(s). Proper inflation should be maintained and check on at least weekly bases and before long distance drives.

Proper inflation should be maintained and checked at least once a week and before a long distance drive.

It is also advisable to take into account axle load and driving conditions when setting inflation pressure. Compensation for heavier loads can be made by increasing inflation pressure, but do not exceed maximum inflation for the tyre or maximum axle load.

In the space of just one month, a tyre can lose 10 pounds of air pressure.

It is important to check your air pressure regularly, to make sure your tyres are neither under nor over inflated.

Under-inflation

Is the worst enemy your tyre can have. It causes increased treadwear on the outside edges (or shoulders) of the tyre. It also generates excessive heat, which reduces tyre durability. Finally it reduces your fuel economy by increasing rolling resistance-soft tyres make your vehicle work harder.

Over-inflation

Is also detrimental to the tyre. Too much air pressure causes the center of the tread to bear the majority of the truck's weight, which leads to faster deterioration and uneven wear. Any kind of uneven wear will shorten the lifespan of your tyres.

FOR YOUR SAFETY AND COMFORT

Any tyre, no matter how well constructed, may fail in use as a result of punctures, impact damage, improper inflation or other conditions resulting from use.

Tire failure may create risk of property damage or personal injury. To reduce the risk of tire failure and for your safety and comfort, we strongly recommend the following:

- Never mount a tyre on a rim that is damaged or which has been repaired by welding or brazing.
- Never inflate beyond 275 kPa (2.75bar, 40psi) to seat beads.
- Tire inflation should be done in a safety cage.
- Do not mix different tyre size designations or construction on the same axle, except for limited use of temporary spare tyres.
- Outer diameter of wheel should be the same as inner diameter of tyre.
- Make sure to follow instructions in the car owner's manual or on the vehicle tyre information placard in the car to maintain proper tyre pressure (Particularly driving on highway and/or when carrying heavy loads).
- Never bleed or reduce air pressure when tyres are hot from driving.
- Over- or under-inflation pressure (including spare tyre) at least once a month and before every long trip.
- Stones, gravel and other outer objects stuck in the tyre treads may damage the tyre. Remove outer objects from the tyre treads.
- Tyre should only be mounted by professionally trained persons.
- Objects in the road such as potholes, glass, metal, rocks, wood debris, curbstones and such, which could damage a tyre should be safely avoided.
- To preserve traffic safety and tyre life, ZC rubber recommends driving safely and avoiding hard acceleration, braking or cornering in unnecessary situations.
- If you feel the car is unstable or feel any unusual noises or vibrations, stop your car in safe place and inspect your tyres. Even if no visible defects are found, drive slowly and ask your dealer to inspect your tyres as soon as possible.
- Winter tyres (studless, stud or snow tyres) should not be mixed with other types of tyres.
- New winter tyre should not be driven over 80km/h for the first 100km.
- When driving on winter roads, sudden starts and quick stops should be avoided and a safe car-to-car driving distance should be maintained.
- When using tyre chains be sure to use the proper size chains and affix with priority to the drive axle.
- Avoid driving with tire chains for long distance on roads with no packed snow or ice.

Never use a tyre under the following conditions and replace tyres immediately:

- If the tread has worn to the tread wear indicator.
- If breaks in the fabric appear.
- If cords or wires are exposed.

Storage of steel belted radial tyres:

- Keep your tyres away from direct sunlight and locations with high temperature, high moisture, heavy electrical machinery, welders etc.
- Tyres should be preferably stored in a cool, dry, and dark room with controlled environment.

To preserve traffic safety, ZC rubber recommends driving substantially slower under adverse weather or road conditions.

TYRE MOUNTING

- The same axle should be mounted the tyres in identical size and structure.
- Please confirm the condition of tyre and rim before mounting and ensure the properly matching of tyre and rim, the damaged tyre and rim should never be used.
- The replacement of tyre and rim must be operated by trained staff and through necessary equipment.
- The old valve must be replaced when you change a new tyre, and ensure that there is no leakage in valve area.
- The inflation pressure should not exceed the pressure recommended.
- Please keep safe when you mount the tyre.

ROUTINE MAINTENANCE

- Each month the tyre pressure should be checked one time at least when the tyre is cool, too much or less of the pressure will cause damage to tyre.
- Please take a 15-minutes break after driving on expressway for two hours.
- Please ensure that there are no nails, metal pieces, glass or other foreign materials.
- Please ensure that there is no damage such as separation, distortion and distinct rusting which will cause air leakage.
- Please transpose the tyres regularly (approximately 5000 km) in accordance with abrasion conditions for the sake of expanding its life span and preventing eccentric wear.
- No tyre brightener.

THE INVENTORY OF STEEL-CORD RADIAL TYRE

The tyre should be placed in dry interior.

Note: In order to ensure the driving safety, we suggest that please decrease the speed while driving under atrocious weather and poor terrain condition.